






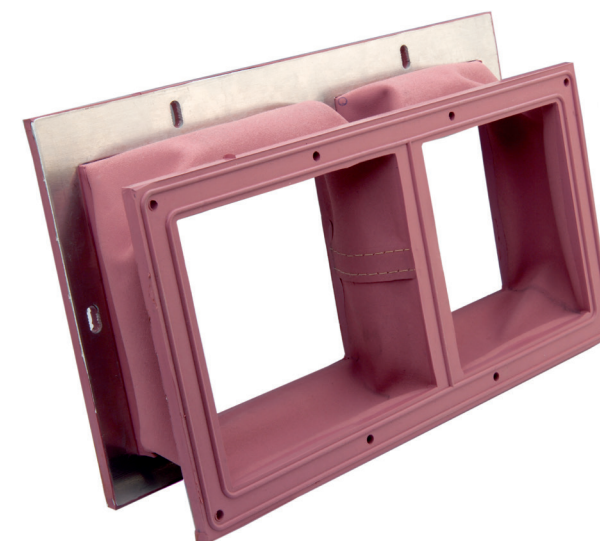
## FABRIC EXPANSION JOINTS FOR RAIL VEHICLES



## FABRIC EXPANSION JOINTS

### HIGHLIGHTS

-  Customized geometry
-  Different installation systems
-  Certified according to international fire safety standards
-  Possibility of incorporating additional insulating materials to avoid thermal bridges
-  Perfect complement to MöllerWerke air ducts



### PRODUCT DESCRIPTION

Fabric expansion joints are high performance, flexible connecting elements for movement and tolerance compensation in HVAC systems.

MöllerWerke fabric expansion joints are used in all types of rail vehicles. Extreme installation situations can be implemented with asymmetric geometries. The connection to the respective interface is established with self-sealing vulcanized flanges. Optionally, the flanges can be made of aluminium or stainless steel.

## Installation systems

### Screw Connection

- Common and well-known connection
- Standardized joining element
- Robust and durable solution
- Expandable with screw-in bushes for defined tightening range (protection of the component, securing of the seal)



### Quick-Release System

- System for faster assembly of the article (installation and exchange)
- No special tools needed
- Well-known and self-explanatory connection system
- Adjustable tightening torque
- Optimized accessibility for maintenance



### Plug-In System

- Individually adapted mounting system
- Used for hard-to-reach or one-sided mounting areas
- Predefined tightening torque (individually defined for application)
- Both form locking and adhesion in one system



## Norms und parameters



### Fire protection classifications

- DIN EN 45545-2
- NFPA 130
- UNI CEI 11170
- Special fire protection requirements

### Resistance

- Low temperature stability  $-50^{\circ}\text{C}$
- Cold break temperature  $-60^{\circ}\text{C}$
- Max. temperature  $+180^{\circ}\text{C}$

Additional insulating materials can be incorporated in the fabric expansion joints to avoid cold bridges. The materials utilized for fabric expansion joints comply with the fire protection classes of most European railway companies.



**MöllerWerke GmbH**

Kupferhammer

33649 Bielefeld

T +49 521 4477-0

[info.moellerwerke@moellergroup.com](mailto:info.moellerwerke@moellergroup.com)

[www.moellerwerke.de](http://www.moellerwerke.de)