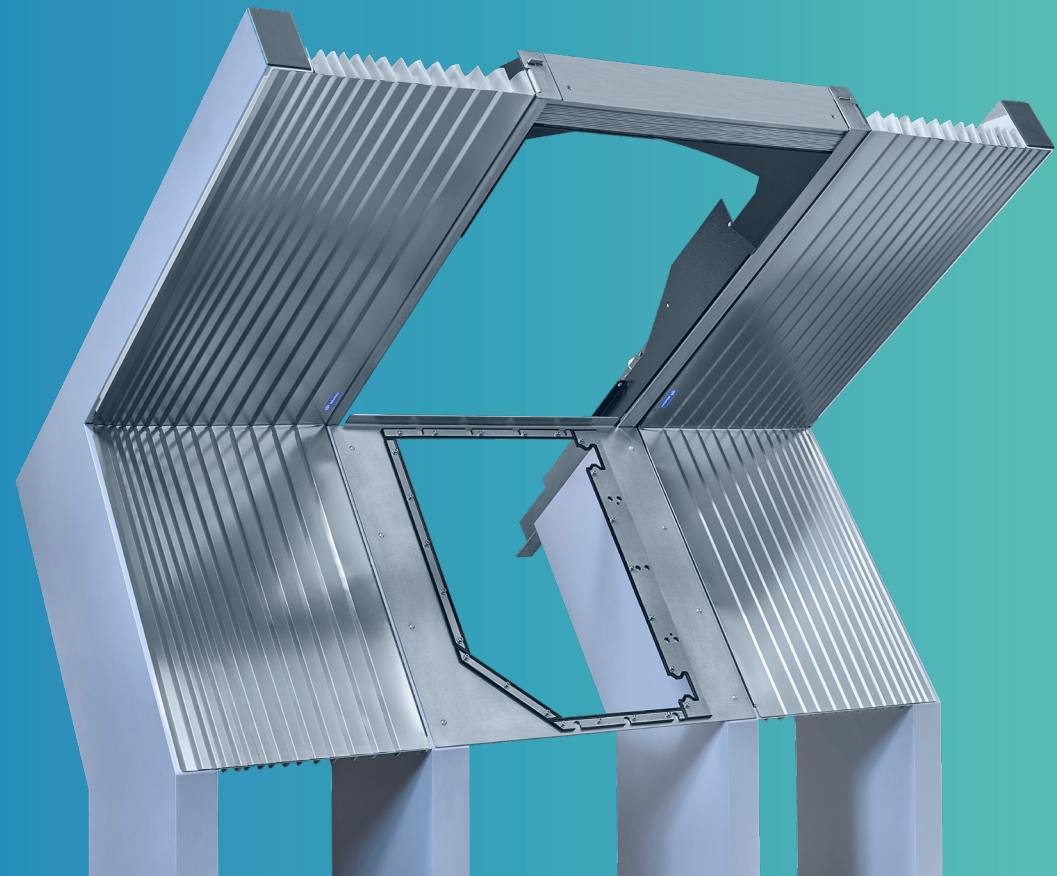


STAHLFLEX® PROTECTIVE COVER







Reliable, low-maintenance and durable

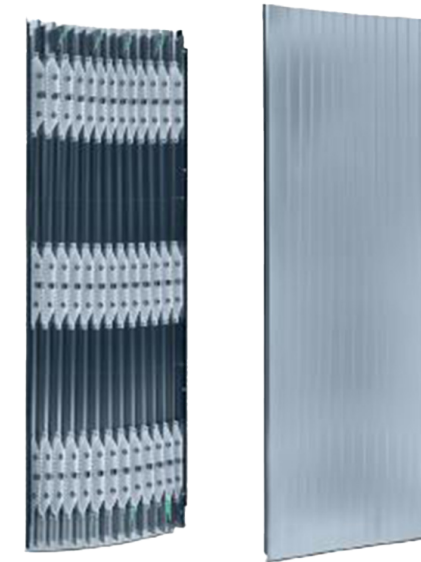


Dynamic. Different. Dedicated.

STAHLFLEX® PROTECTIVE COVER

HIGHLIGHTS

-  Low mass due to lightweight design
-  Low-maintenance
-  Durable
-  Cost-efficient
-  Designed for high speeds and accelerations
-  Also available in a modular design with interchangeable lamellas

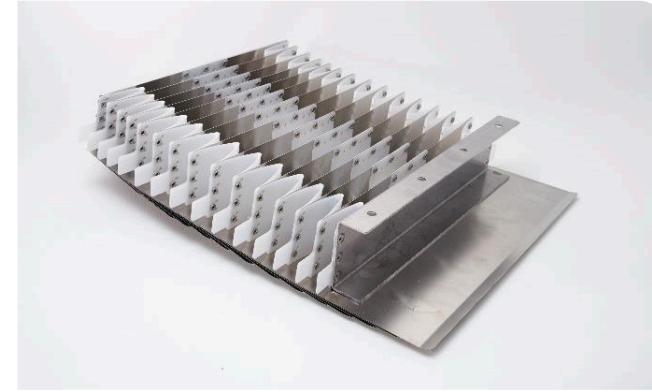


PRODUCT DESCRIPTION

The innovative STAHLFLEX® protective cover combines minimal mass with quiet, smooth running characteristics and is highly wear-resistant. The lightweight construction, consisting of metal as well as plastic connecting elements, enables very high traverse speeds and accelerations. Due to the modular construction individual STAHLFLEX® elements can be replaced quickly and easily in the event of damage.

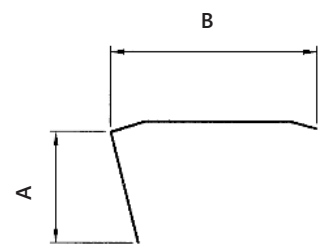
Reliable, low-maintenance, durable – Find out more about STAHLFLEX® – **Made by MöllerWerke**

Riveted STAHLFLEX® protective cover for overhead or vertical installation

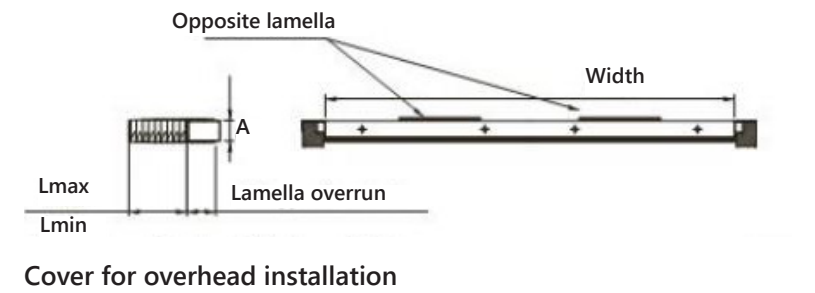


Lamella		Lmax/ Lamella	Lmin/ Lamella
Lamella width B	Lamella bevel A	Extension per lamella	Block size per lamella
65 mm	40 mm	50 mm	4,5 mm
75 mm	45 mm	60 mm	4,5 mm
85 mm	50 mm	70 mm	4,5 mm
100 mm	60 mm	85 mm	4,5 mm
115 mm	70 mm	100 mm	4,5 mm

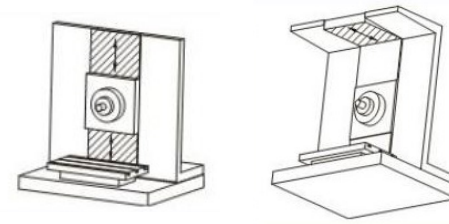
Lamella



Folds = L_{max} / L_{max} per lamella
 $L_{min} = \text{Folds} \times L_{min}$ per lamella
 plus lamella overrun

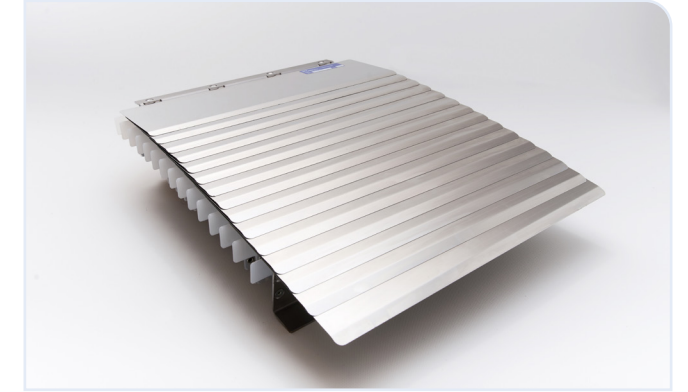


Cover for overhead installation



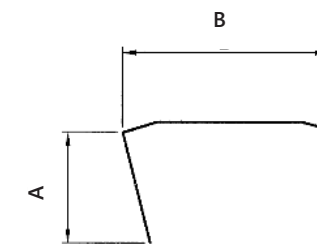
Cover for vertical installation

Riveted STAHLFLEX® protective cover for large vertical installation

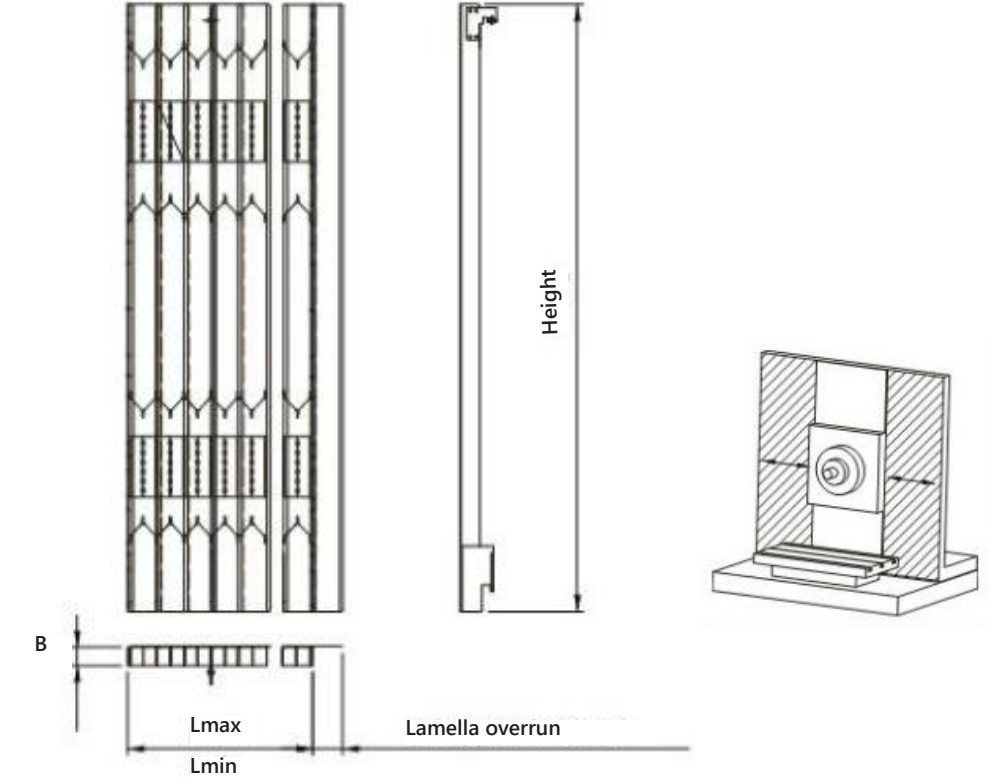


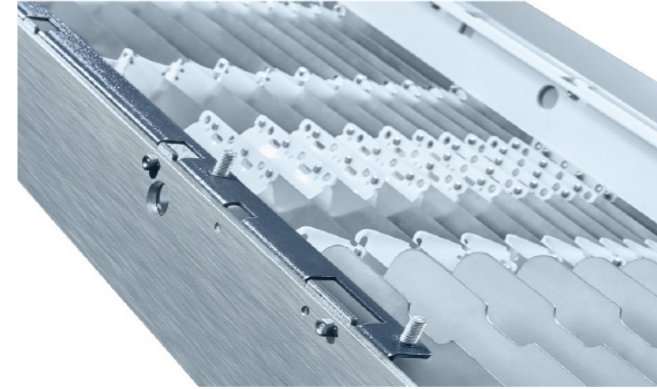
Lamella		Lmax/ Lamella	Lmin/ Lamella
Lamella width B	Lamella bevel A	Extension per lamella	Block size per lamella
65 mm	40 mm	50 mm	6 mm
75 mm	45 mm	60 mm	6 mm
85 mm	50 mm	70 mm	6 mm
100 mm	60 mm	85 mm	6 mm
115 mm	70 mm	100 mm	6 mm

Lamella



Folds = L_{max} / L_{max} per lamella
 $L_{min} = \text{Folds} \times L_{min}$ per lamella
 plus lamella overrun

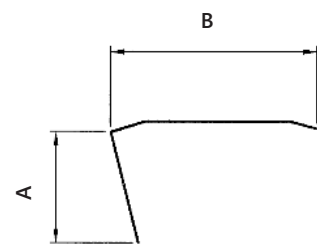




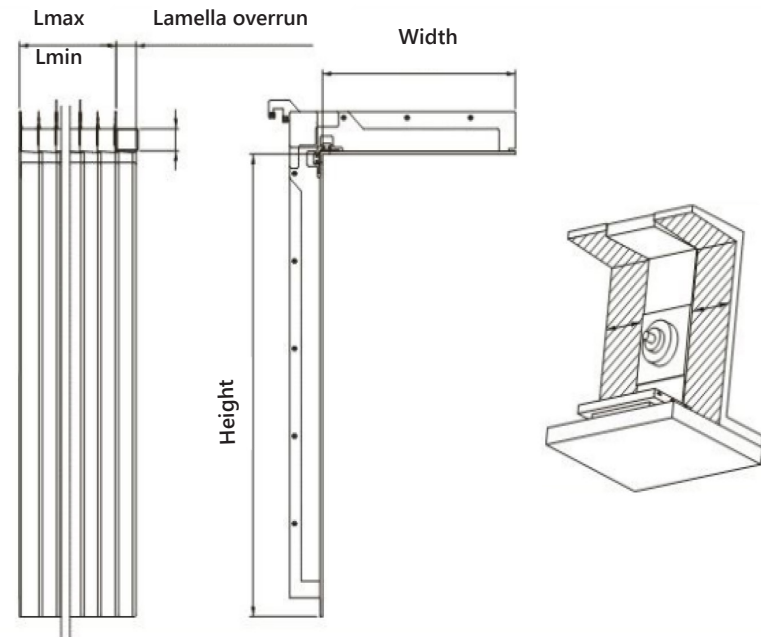
Riveted STAHLFLEX® protective cover as a system solution for walls and roofs

Lamella		Lmax/ Lamella	Lmin/ Lamella
Lamella width B	Lamella bevel A	Extension per lamella	Block size per lamella
65 mm	40 mm	50 mm	4,5 mm
75 mm	45 mm	60 mm	4,5 mm
85 mm	50 mm	70 mm	4,5 mm
100 mm	60 mm	85 mm	4,5 mm
115 mm	70 mm	100 mm	4,5 mm

Lamella



Folds = L_{max} / L_{max} per lamella
 $L_{min} = \text{Folds} \times L_{min}$ per lamella plus lamella overrun

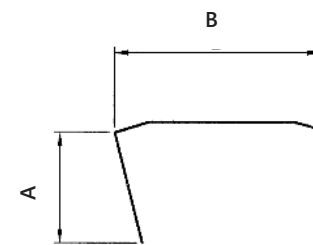


Modular STAHLFLEX® protective cover for large vertical installation and as a system solution for walls and roofs

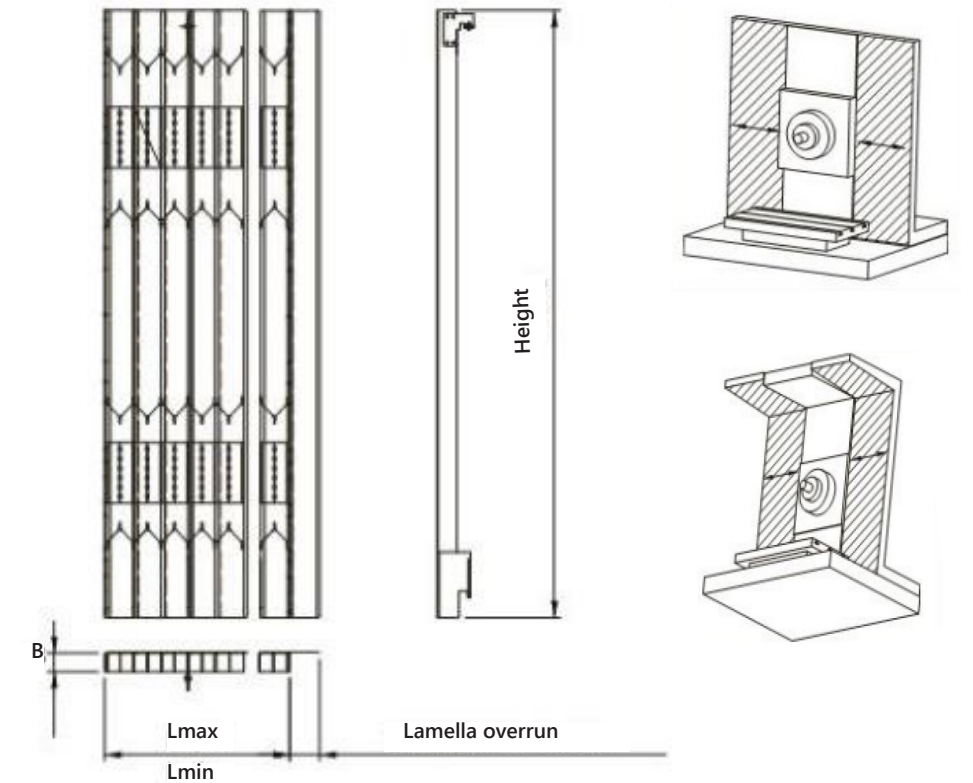


Lamella		Lmax/ Lamella	Lmin/ Lamella
Lamella width B	Lamella bevel A	Extension per lamella	Block size per lamella
65 mm	40 mm	50 mm	7,5 mm
75 mm	45 mm	60 mm	7,5 mm
85 mm	50 mm	70 mm	7,5 mm
100 mm	60 mm	85 mm	7,5 mm
115 mm	70 mm	100 mm	7,5 mm

Lamella



Folds = L_{max} / L_{max} per lamella
 $L_{min} = \text{Folds} \times L_{min}$ per lamella plus lamella overrun





MöllerWerke GmbH

Kupferhammer

33649 Bielefeld

T +49 521 4477-0

info.moellerwerke@moellergroup.com

www.moellerwerke.de